

4K UHD IWB Display Platform & Sensor AI

Experience the Power of { AI + IoT } in Education.



Curiosity



4K Camera



Temperature and Humidity Sensor



Ambient Brightness Monitoring



Classroom Sentimental Analysis



Noise and Motion Detection



Classroom Behaviour Management



Cloud-powered AI Insights

Supercharge Classrooms

with a Full Classroom Management System

Quiriosity, a 4K-UHD interactive panel with built-in teaching tools and a classroom management system, is a perfect replacement for traditional blackboards & IWBs in schools.

Experience the joy of ultra-smooth writing, annotating and teaching on 4K Ultra High-Definition Quiriosity Interactive Panel, bundled with an array of assistive teaching tools and AI Powered learning Platform Kneura Cloud.

- Promotes **interactive** and **collaborative** learning on 4K interactive Panel with a **slim frame display** of 14mm
- **Anti-glare** coating and highly **durable Mohs-7 toughened glass** to withstand any scratch
- **Ultra-smooth writing** powered by Surface Light Wave Technology
- **Compatible with all devices** and allows **screen casting** and **file sharing** through a companion app
- **Unlimited access** to **curated content** through KSAR - Educational Search Engine and My Cloud
- **Captivating smart tools** to optimize teaching environment and elevate learning graph

4K UHD IWB Display



Accessories

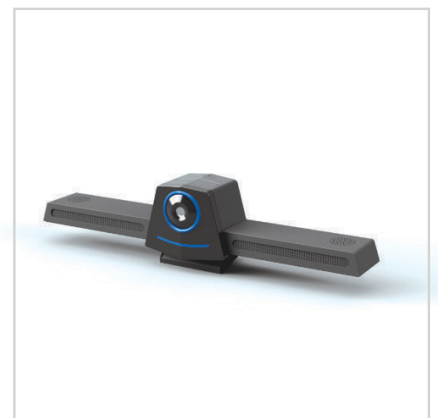


BoardScan

BoardScan converts handwritten content on Whiteboard/Greenboard into digital text, which can be further saved, downloaded and shared.

ClassEQ Sensor

An AI-enabled Image and Audio DSP sensor solution to capture the classroom behaviour and noise levels for feedback to teachers.



Quriosity Specifications

	65" (1651 mm)	75" (1905 mm)	86" (2184.4 mm)	98" (2489.2 mm)
Interactivity (Touch Screen Experience)	✓			
Movement Detection Technology	Ultra Light Wave (IR based)			
Chipset	ARM® Quad Core, 1.5 Hz			
RAM/ROM	3G/32G (expandable up to 256 GB via external memory card)			
Simultaneous Touch Points	20 Points			
Precision	±1mm			
Active area (mm)	1428.48 * 803	1647.36 * 926.64	1895.04 * 1065.96	2158.848 * 1214.352
Aspect Ratio	16:9			
Colors	1.07B (10 bit)			
Resolution (pixels)	3840 x 2160 (4K UHD)			
Brightness (typ/min)	400cd/m² or 450cd/m² (typ.)			
Interactive White-boarding Software (annotation and black-boarding)	✓ Kneura™ Teach (Built-in)			
Built-in processor	✓			
Embedded OS	Kneura™ OS Android™ version			
Cross platform support (BYOD) 	✓			
Wireless Collaboration & Document upload 	✓			
Easy Sharing	✓ Share notes through QR code			
Built-in WiFi	✓ IEEE 802.11a/b/g/n			
Connectivity	Power, HDMI®(2), USB 2.0(4), Micro SD, AV Input, AV Output, YPbPr Input, RJ45, SPDIF Output, VGA Input, VGA Audio, Input, RS232, Touch USB, RF, Headset			HDMI® IN(3), DP IN, VGA IN, TV IN, AV IN, YPbPr IN, OPS, LAN(2), USB(4), Touch USB(2), Audio IN, RS232, HDMI® OUT, AV OUT, SPDIF OUT, Audio OUT
Speaker Type	Built-in Speaker (15W x 2)			
Type	LED 60Hz			
Power Supply	AC 100V - 240V, 50/60Hz			
Power Consumption Maximum	170W	400W	440W	500W
Power Consumption Standby	<0.5W			
Sensors*	Temperature and humidity sensor, Noise and motion detector, Ambient Brightness Monitoring			
Glass Surface	4mm Toughened Glass, Mohs-7			
Facial Tracking*	✓ With ClassEQ Sensor (Optional accessory)			
Accessories (Standard)	Passive Stylus (2), Power cable, Wall mount			
Accessories (Optional)	<ul style="list-style-type: none"> - BoardScan - ClassEQ Sensor - OPS 			

Curiosity Specifications* (Optional Accessories)

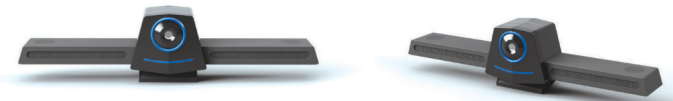
BoardScan	
Overview	BoardScan converts handwritten content on Greenboard/Whiteboard into digital text, which can be further saved, downloaded and shared.
Max. Whiteboard/ Greenboard size supported	6 ft x 4 ft (1.8m x 1.2m)
Connectivity	USB
Resolution	3840 x 2160
Sensitivity	1000mV/Lux-sec-sec
Shutter	Electronic rolling shutter
Power	5V
Current	200mA
FOV	184°
Accessories (Standard)	Wall mount, Mounting screws, 5m USB cable



* Disclaimer: Product specifications and data are subject to change without notice to improve reliability, functions, design or otherwise. All features and colors mentioned are not available on all models

OPS	
Processor	Intel Core i3 / i5 / i7
RAM	4GB / 8GB
HDD	500GB / 1TB
OS	Windows 10
Wi-Fi	✓
Connectivity	HDMI® (1), USB 2.0 (4), LAN (1), Audio (1), Speaker Out (1)
Antivirus	✓
Accessories (Optional)	- SSD upto 256GB

ClassEQ Sensor	
Overview	An AI-enabled Image and Audio DSP sensor solution to capture the classroom behaviour and noise levels for feedback to teachers.
Built-in camera and microphone array	✓
Camera Quality	HD 720p/Full HD 1080p/4K 2160p
Microphone	4 Acoustic MEMS Microphones
Voice Capture Distance	5m Radius Voice Capture (extendable up to 20m depending on environment conditions))
Microphone Features	VAD(Voice Activity Detection) and DOA(Direction of Arrival)
Integrated Voice DSP Features	4- mic adaptive beam-former Full-duplex Acoustic Echo Cancellation(AEC) with barge-in support (up to 50dB att.) De-reverberation, noise suppression (up to 15dB att.), Automatic Gain Control(AEC)
Connectivity	USB
Facial Tracking*	✓
Accessories (Standard)	Micro USB cable



* 4K is supported with usb 3.0 only



Registered Offices

Germany: Cybernetyx Interaktiv
Georgstraße 38, 30159, Hannover
Ph: +49 (0)511 93621 188

India: Cybernetyx Technik (P) Ltd.

NCR: Plot no. C-98, Sector- 65, NOIDA 201301,
Ph: +91 (0)120 435 9466

Bangalore: Level 1, VGR Essor, 6th Main Rd,
Sector-6, HSR Layout, Bangalore, Karnataka, 560102
Ph: +91 (0)888 474 3388

For more information

Visit: www.cybernetyx.com
Email: hello@cybernetyx.com