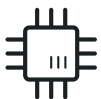


# Portable **AI Devices** For Intelligent **Classrooms**

Galileo One



Quad Core  
ARM® Processor



Built-in  
Android® System



Intuitive  
Teaching Tools



Built-in Content  
Search Engine




Supports  
BYOD



Surface  
Independent



Wireless  
Touchback

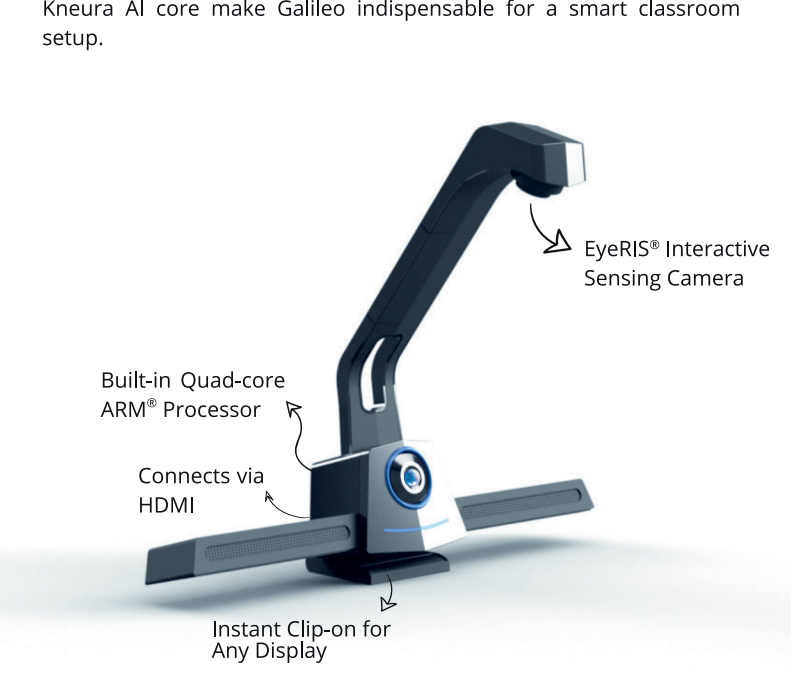


# Elevate Learning Outcomes with Perceptual AI

Carefully designed for classrooms and packed with most advanced features so much so that it will augment the way you teach.

Just place the unit onto any regular TV/Panel to turn it into a full-powered touchscreen via the built-in award winning EyeRIS® optical 3D tracking technology. A minimalist design, easy setup and a powerful Kneura AI core make Galileo indispensable for a smart classroom setup.

- **Multi-touch capabilities** with a tracking speed of up to 120 frames per second and a response time of up to 195 million dots/second.
- **Ultra-smooth writing** on a digital whiteboard with in-built casting and multi-user collaboration.
- **Intuitive Whiteboard Teaching Software** with a gamut of AI-enabled ‘assistive teaching’ tools.
- **Built-in STEM tools**, free access to millions of AI-indexed content and educational resources through KSAR – an educational search engine and MyCloud search.
- Delivers **Personalized Learning** through an AI-Powered learning platform Kneura Cloud.



## Accessories



### BoardScan







BoardScan converts handwritten content on Whiteboard/Greenboard into digital text, which can be further saved, downloaded and shared.



### Cybernetyx® FP65

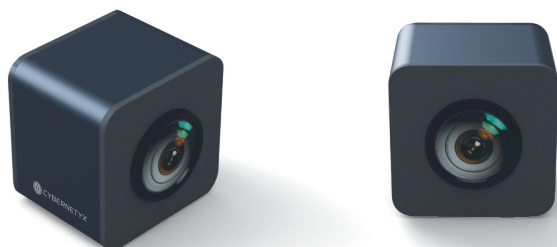
Instruct on 4K UHD Cybernetyx FP65 that is optimized for heavy usage in the classrooms with spectacular viewing experiences. This gen-next smart display features anti-glare coating and highly durable Mohs-7 toughened glass to withstand any scratch.

## Galileo Specifications

	Galileo One
Overview	Galileo One transforms any standard display or projection surface into seamless touch interactive and collaborative learning space with augmented capabilities.
Built-in Computer	✓
Interactive Camera (Touchscreen experience)	✓ EyeRIS® built-in 3-D Dual-band Optical
Wireless Touch support	✓
Embedded OS	Kneura™ OS Android™ version
Simultaneous Touch Points	10#
Built-in WiFi	✓ IEEE 802.11a/b/g/n (Dual Band)
Accuracy	+/-2px
Display Size Support	32" to 75"
Ambient Light Resistance Technology	830nm +/-20 & 650nm +/-20 dual band tracking technology (Visible and IR bands)
Tracking Speed & Response time	120 FPS (can be extended upto 200 FPS) & 195 million dots/sec
Calibration Technology	Automatic as well as Manual Calibration
Stylus Power Requirements	Super-Capacitive technology, No Consumables, 3 minutes charging time through USB
IWB Suite	✓ Kneura™ Teach (Built-in, Windows®, Mac®)
Cross platform support (BYOD)   	✓
Wireless Collaboration & Document upload   	✓
Easy Sharing	✓ Share notes through QR code
Facial Tracking*	✗
Connectivity	I/O HDMI , USB 2.0, USB 3.0, Micro SD, OTG Micro USB, DC In
Accessories (Standard)	Super Capacitive Stylus (2), Micro USB cable, Stylus charging cable (2), Power cable, Power adapter, USB Remote, Wall mount, Kensington lock
Accessories (Optional)	- Cybernetyx® FP65 - BoardScan

# Galileo Specifications\* (Optional Accessories)

BoardScan	
Overview	BoardScan converts handwritten content on Greenboard/Whiteboard into digital text, which can be further saved, downloaded and shared.
Max. Whiteboard/ Greenboard size supported	6 ft x 4 ft (1.8m x 1.2m)
Connectivity	USB
Resolution	3840 x 2160
Sensitivity	1000mV/Lux-sec-sec
Shutter	Electronic rolling shutter
Power	5V
Current	200mA
FOV	184°
Accessories (Standard)	Wall mount, Mounting screws, 5m USB cable



Cybernetyx® FP65	
Overview	Instruct on 4K UHD Cybernetyx FP65 that is optimized for heavy usage in the classrooms with spectacular viewing experiences. This gen-next smart display features anti-glare coating and highly durable Mohs-7 toughened glass to withstand any scratch.
Diagonal Size	65"
Type	LED 60Hz
Resolution	3840 x 2160
Brightness	≥350 cd/m²
Contrast ratio	up to 5000:1
Viewing Angle(H/V)	H:≥70°, V:≥60°
Speaker Type	Built-in Speaker (10W x 2)
Connectivity	I/O HDMI (3), USB 2.0(2), Micro SD, AV Input, RF, YPbPr, VGA + Audio, AV Output, RJ45, Digital audio Output
Power Supply	AC 220V / 50Hz
Power Consumption Typical	60W
Power Consumption Standby	≤0.5W
Accessories (Standard)	Wall mount, Mounting screws, Remote Control



\* Disclaimer: Product specifications and data are subject to change without notice to improve reliability, functions, design or otherwise. All features and colors mentioned are not available on all models



## Registered Offices

**Germany: Cybernetyx Interaktiv**  
Georgstraße 38, 30159, Hannover  
Ph: +49 (0)511 93621 188

**India: Cybernetyx Technik (P) Ltd.**

**NCR:** Plot no. C-98, Sector- 65, NOIDA 201301,  
Ph: +91 (0)120 435 9466

**Bangalore:** Level 1, VGR Essor, 6th Main Rd,  
Sector-7, HSR Layout, Bangalore, Karnataka, 560102  
Ph: +91 (0)888 474 3388

## For more information

**Visit:** [www.cybernetyx.com](http://www.cybernetyx.com)  
**Email:** [hello@cybernetyx.com](mailto:hello@cybernetyx.com)